

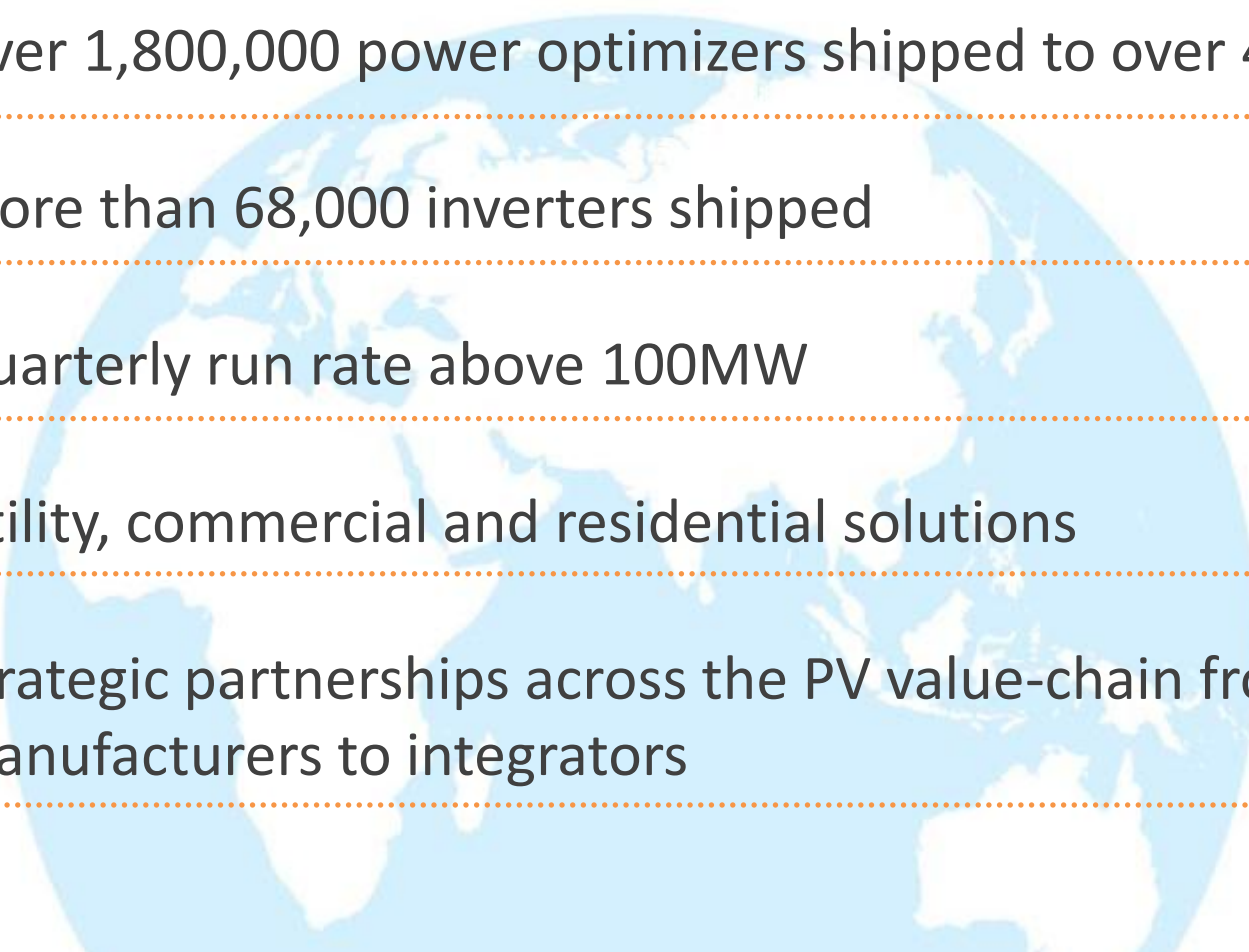
**SolarEdge
Commercial
Offering**

2013



SolarEdge at a Glance

Established the DC power optimizer segment and leads it with a market share of over 70%



Over 1,800,000 power optimizers shipped to over 40 countries

More than 68,000 inverters shipped

Quarterly run rate above 100MW

Utility, commercial and residential solutions

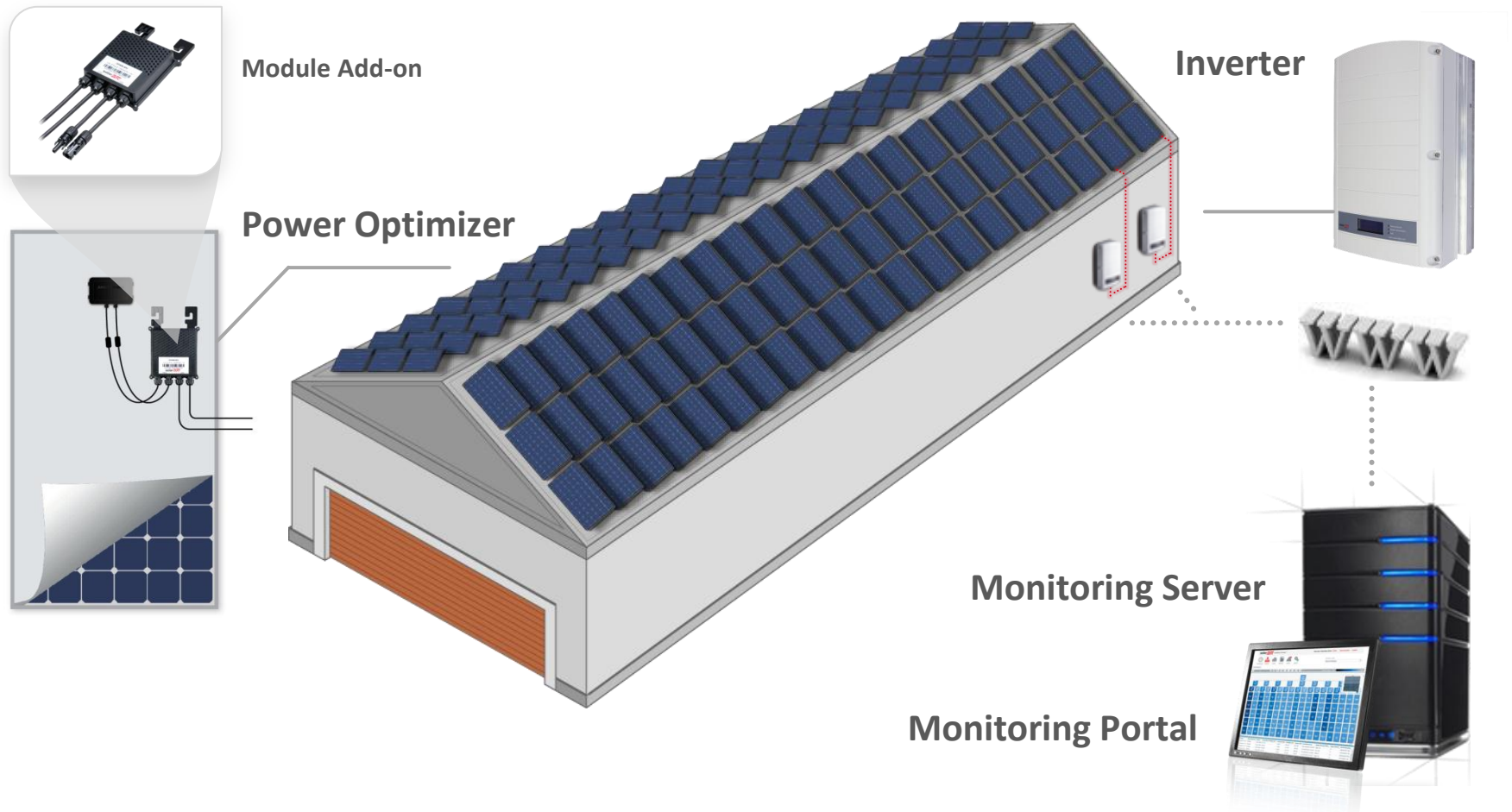
Strategic partnerships across the PV value-chain from module manufacturers to integrators

- SolarEdge Commercial Solution Benefits
- Profit Calculation
 - Lifetime Cost
 - Lifetime Energy Produced
- SolarEdge Commercial Product Offering
- Case studies

SolarEdge Commercial Solution Benefits

SolarEdge System Overview

- Module level optimization
- Fixed voltage – flexible design
- Module level monitoring
- Enhanced safety solution



2% - 10% More Energy

- More energy due to module-level MPPT
- Mismatch power losses eliminated:
 - No manufacturing or shipment-related mismatch loss
 - No soiling and/or aging mismatch loss
 - No inter-row shading mismatch loss



Traditional SolarEdge

Best-case system

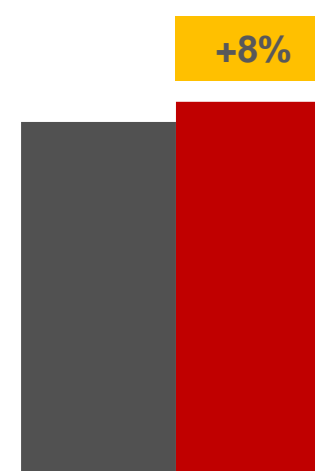
Inherent mismatch only
(no shading, no soiling)



Traditional SolarEdge

Good system design

Inherent mismatch and low
shading level



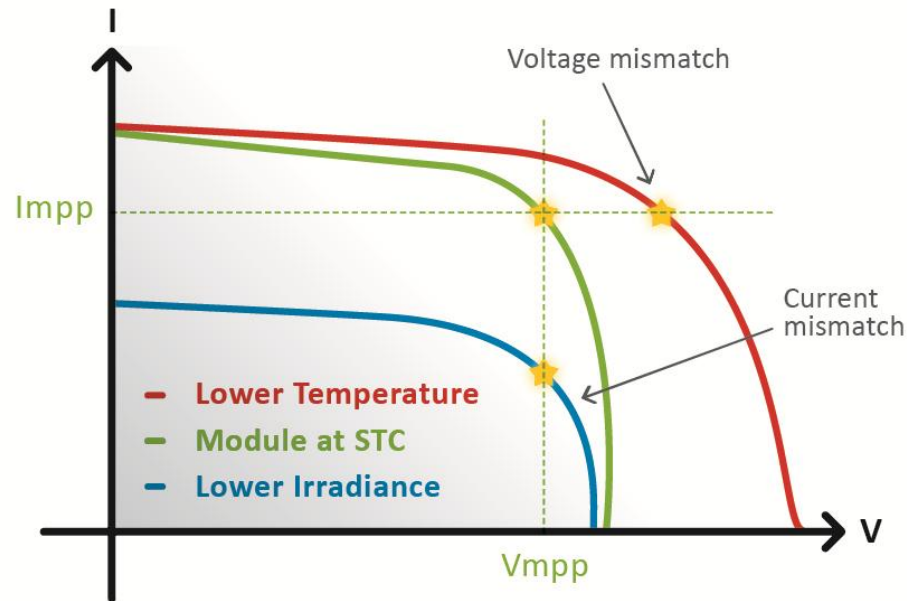
Traditional SolarEdge

Typical system

Additional minor
environmental mismatch

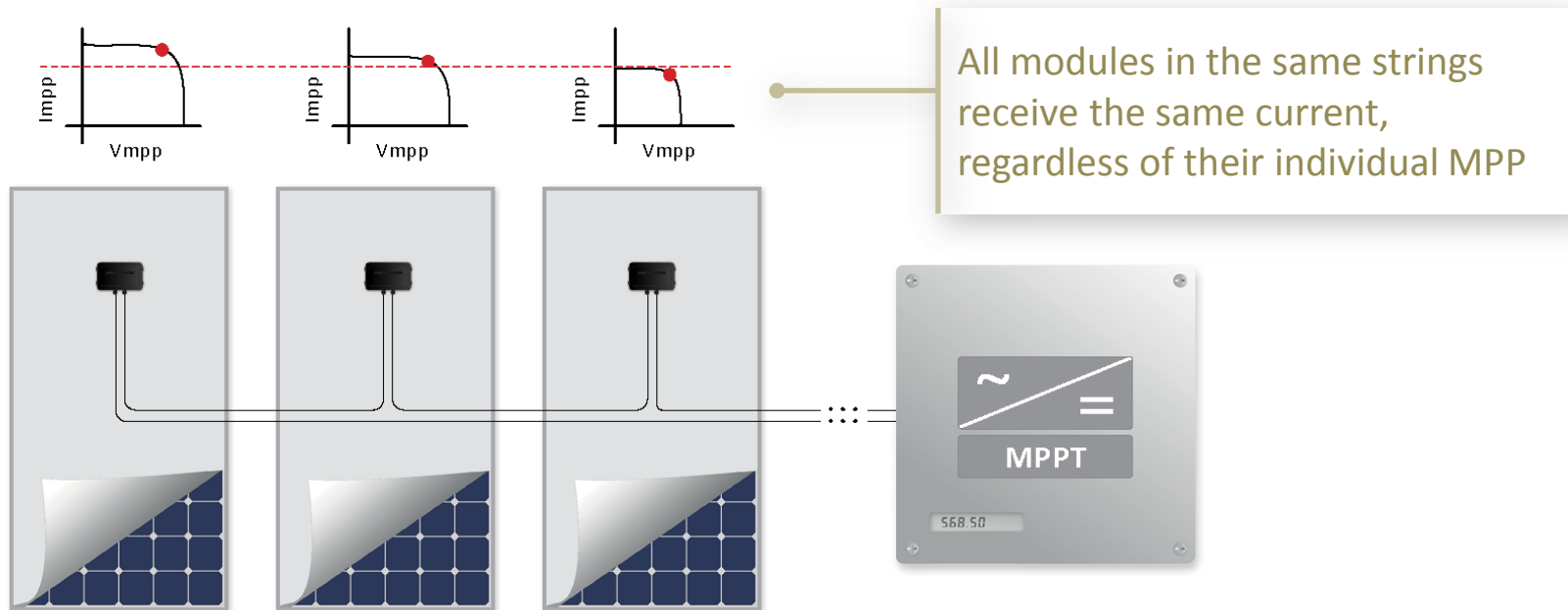
Module Mismatch Always Exists

- Each module has an individual IV curve and provides maximum power at specific optimal current & voltage ($P=I*V$)
 - The maximum power point is abbreviated MPP, ($P_{mpp}= I_{mpp}*V_{mpp}$)
 - Module IV curve depends on the individual electrical properties of the module and the ambient conditions (irradiance , temperature)
- Modules with different IV curves = module mismatch



Module Mismatch -> Power Loss

- Traditional inverters perform MPPT (Maximum Power Point Tracking) for the entire string
 - Due to the module mismatch, weaker modules either impact the output of the entire string or are bypassed



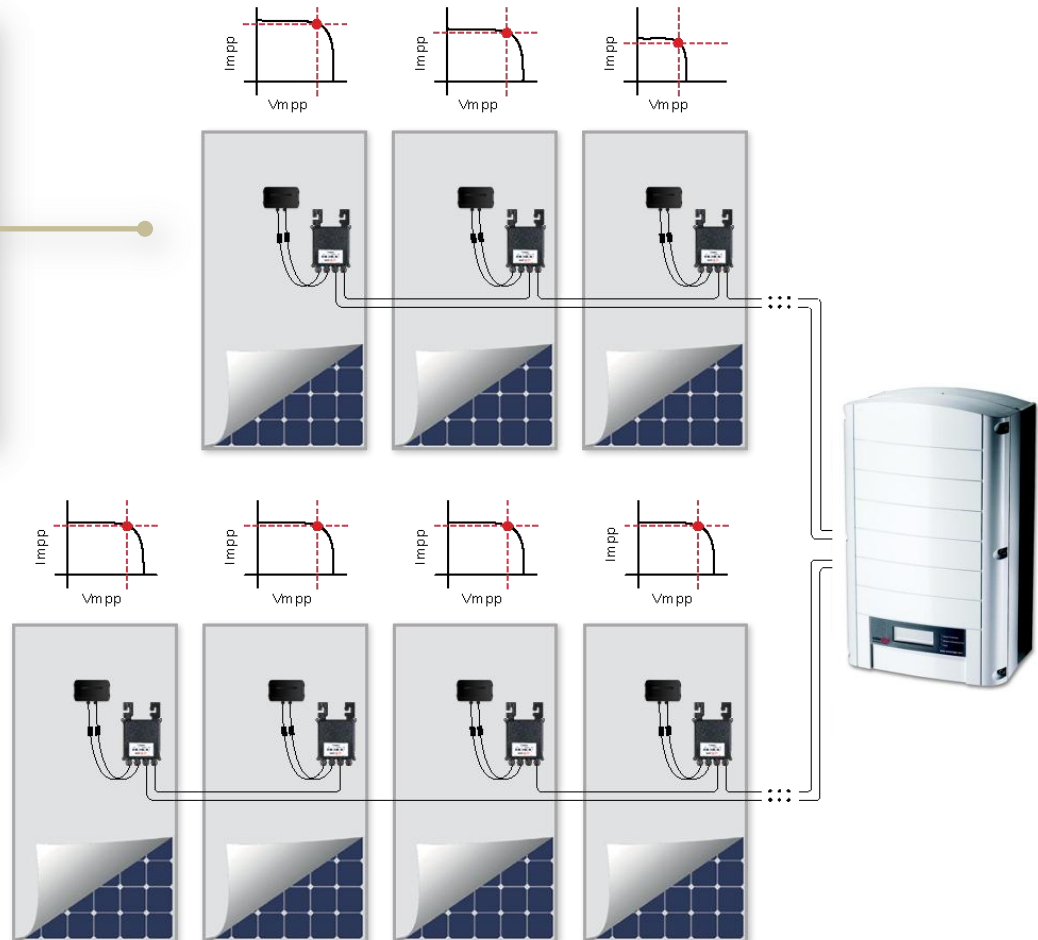
Module-Level Power Optimizers

Up to 10% More Energy for commercial systems

Module-level MPPT

Current & voltage adjusted per module

- eliminating module mismatch
- maximum power from each module individually



Multiple Mismatch Sources

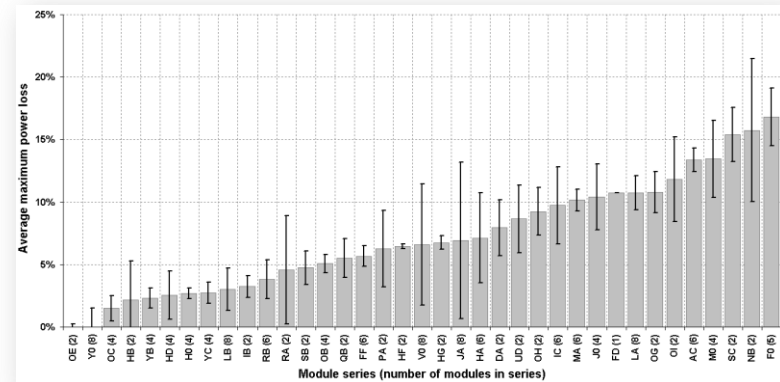
Module mismatch challenges PV plant planners, installers & owners

- Manufacturing tolerance
- Undetected transport damage
- Temperature mismatch
- Soiling mismatch
- Uneven module aging rate
- Partial shading – inter-row, and cloud fronts

Perfect site design, shading prevention, and even sorting by factory flash test reports cannot resolve mismatch power loss

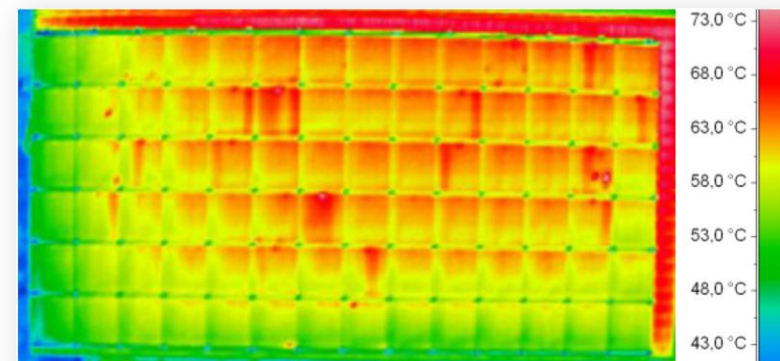
Uneven module ageing

Black lines: Power variance of identical modules after 20 years



Temperature mismatch

13°C temperature decrease from the top module row to the bottom row (7.8m distance), due to convective heat transfer

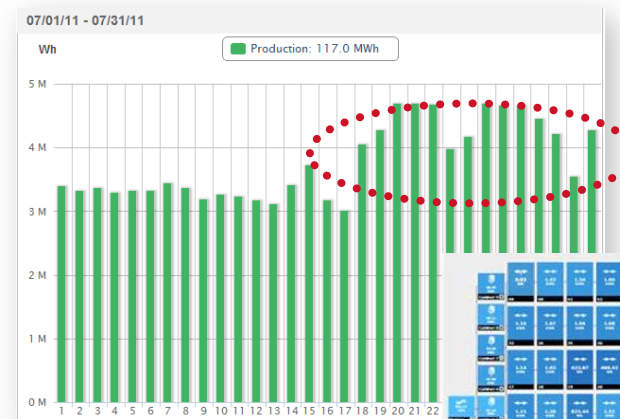


Mismatch Due to Soiling

- Module soiling by dirt or bird droppings contributes to mismatch between modules and strings (beyond power loss due to sunlight blockage)
- Soiling mismatch exposed by a SolarEdge monitoring system connected to the strings of a 700kW plant, installed flat on a winery roof in California:

Before: String mismatch due to uninterrupted soiling (shade of blue = daily string energy)

After: cleaning the modules increased power output by over 30% (1MWh per day)

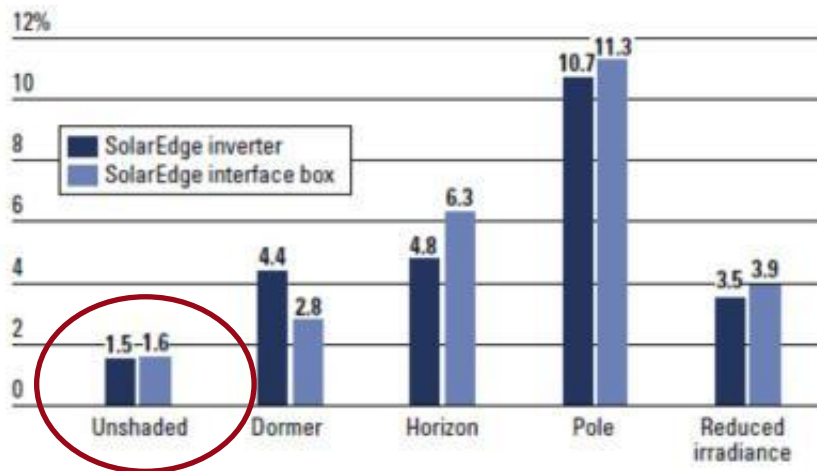


Source: SolarEdge Monitoring Portal. 700kW site monitored by SolarEdge String Monitoring Combiner Box (MCB), 7/2011

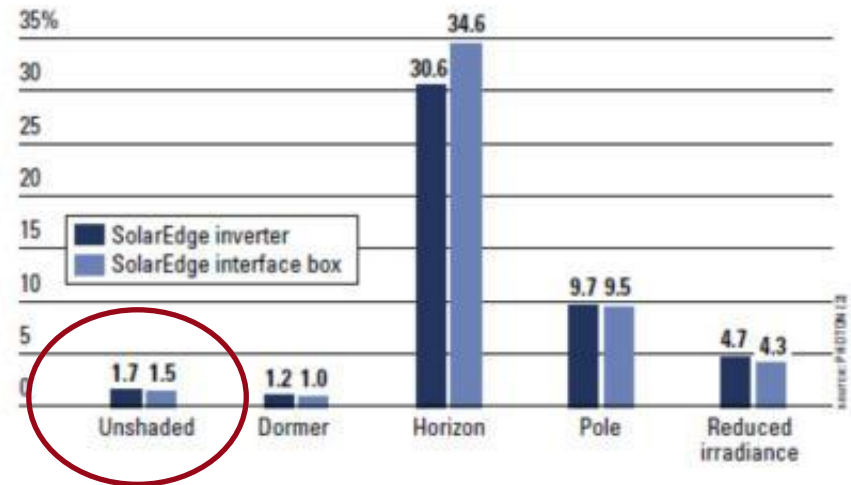
Added Energy – In All Scenarios

- **PHOTON Magazine** proves: added yield ranges between 2% - 25%
 - PHOTON Labs tested and compared the added energy output of SolarEdge power optimizers to a traditional inverter in the October 2011 issue

Additional yield produced by SolarEdge power optimizers - two parallel strings of seven modules each



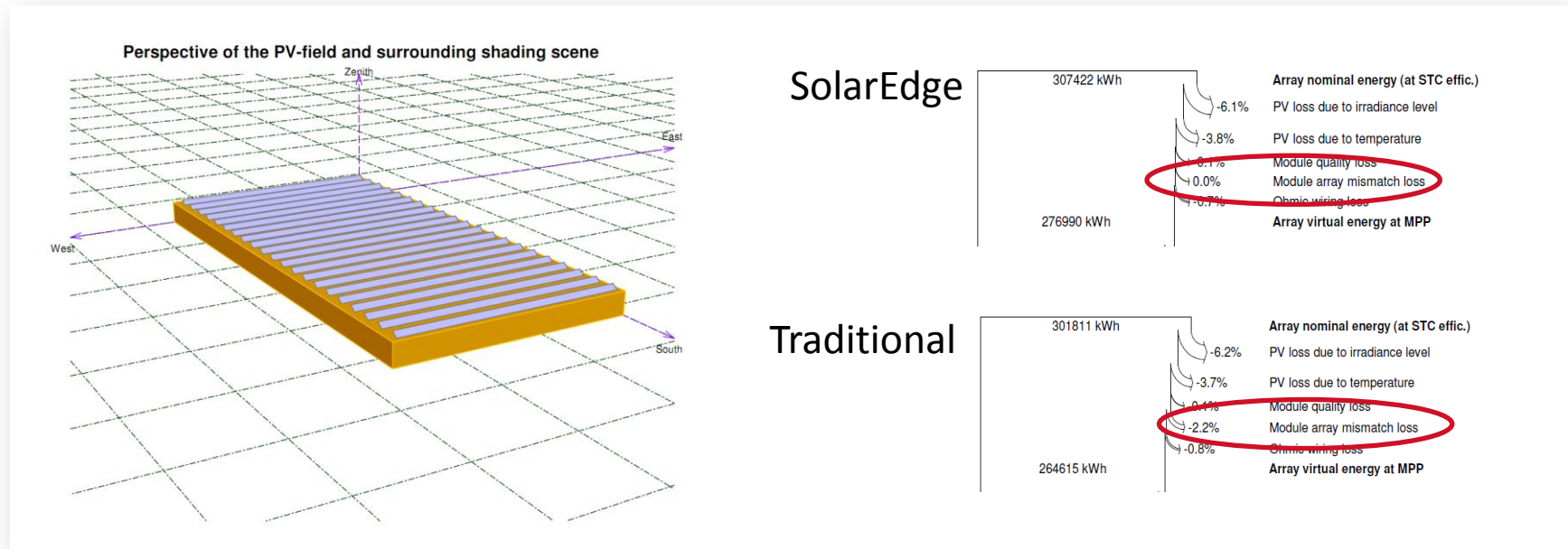
Additional yield produced by SolarEdge power optimizers - one string of 14 modules



Added Energy – No Shade

Module manufacturing mismatch

- Even if shading is avoided completely, module manufacturing mismatch still gives SolarEdge an advantage
 - 2% standard energy gain for SolarEdge on module manufacturing tolerance according to leading simulation software (PVsyst, PVSol):



BoS Saving by Longer Strings

- Up to 50 modules (power optimizers) per string



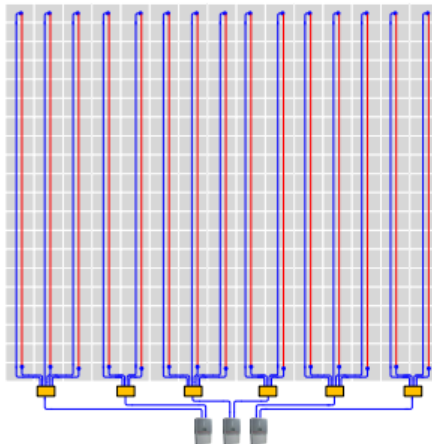
Fewer strings



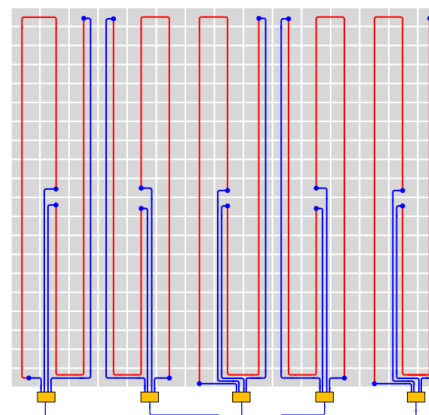
Less wiring, combiner boxes, fuses, etc.



- Up to 50% reduction in BoS cost



Traditional inverter



3 x SolarEdge SE17k 2 x SolarEdge SE16k

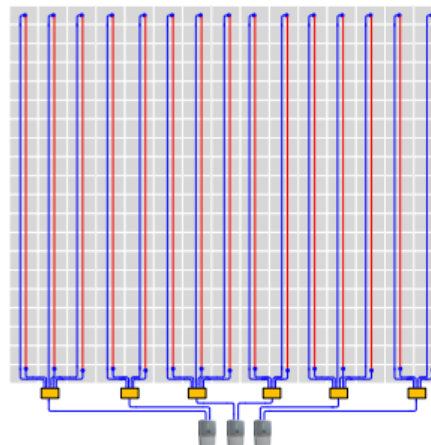
Unique SolarEdge feature - Fixed String Voltage enables:

- Simple system design:
 - No need to calculate string length based on Voc/Vmpp
 - Strings of different lengths
 - Partial/ inter-row shading allowed
- Longer strings:
 - Up to 50 power optimizers per string
 - Fewer combiner boxes and fuses
- Maximum roof utilization:
 - Parallel strings of unequal lengths
 - Modules on multiple roof facets
 - Modules with different power ratings
- Future replacement of modules with any type/model/capacity

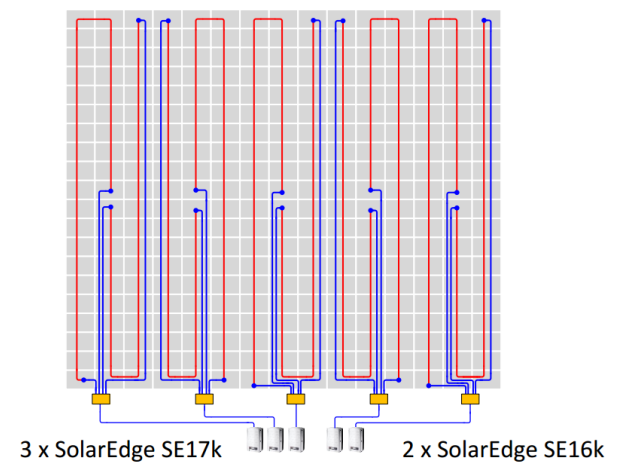
BoS Saving – 84kW System

■ 50% BoS saving

	Leading Traditional Inverter	SolarEdge
Modules	300 x 280W	300 x 280W
Inverters	3 x 27.6kW	3 x SE17k and 2 x SE16k
Strings	15 strings, 20 modules each	10 strings, 30 modules each
6mm ² PV wire	336 m	225 m
10mm ² PV wire	120 m	92 m
String boxes	6	5
Inverter DC breakers	3	5
Cost	100%	50%

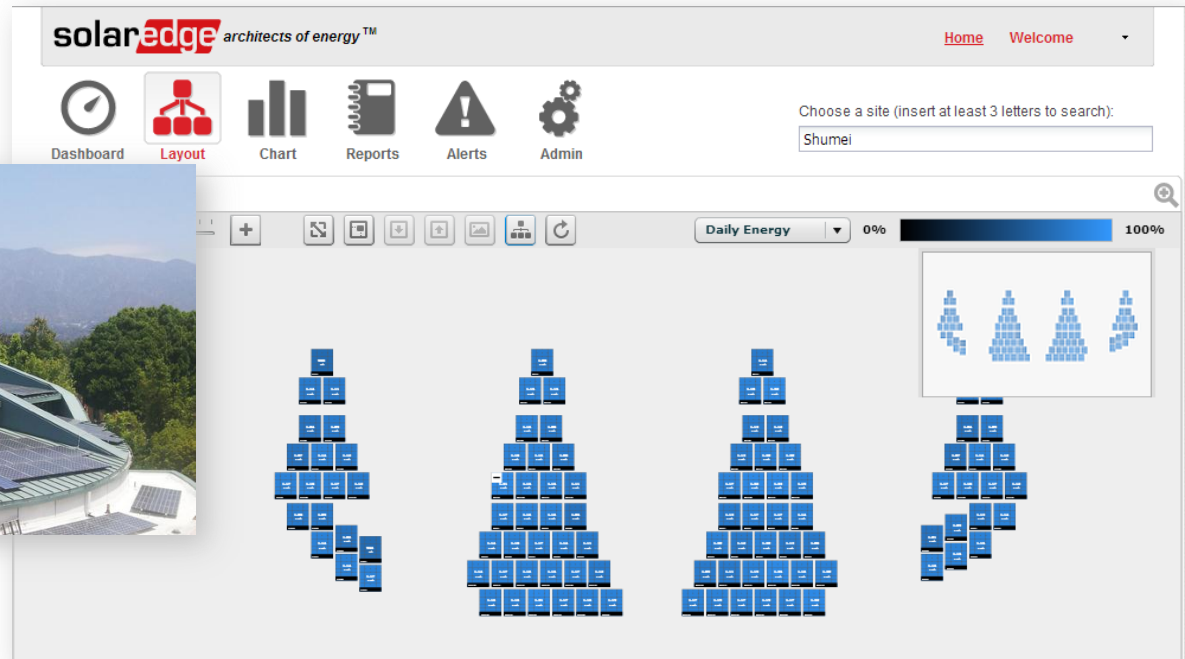


Traditional inverter



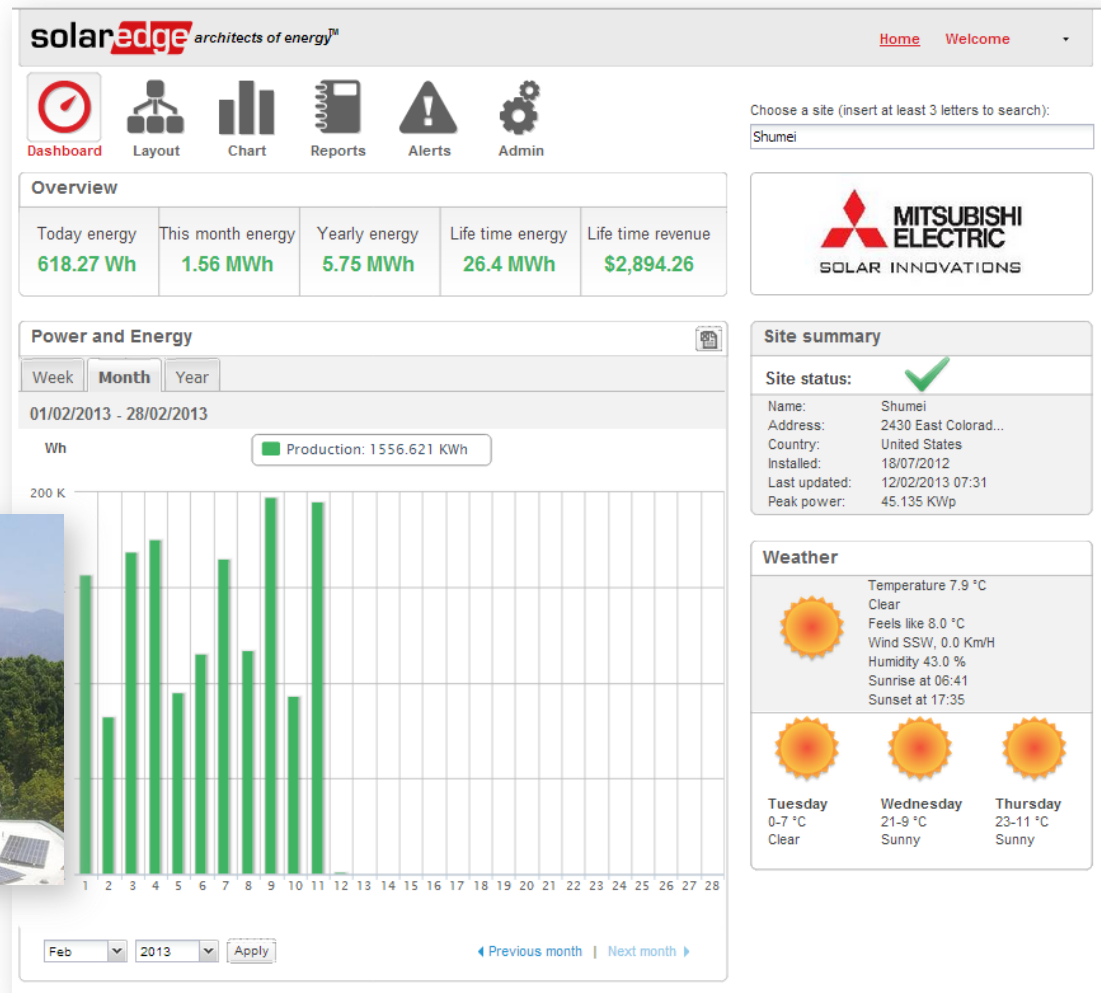
3 x SolarEdge SE17k | 2 x SolarEdge SE16k

- Module-level performance monitoring & remote troubleshooting
 - Module-level performance data available in real-time
 - Module-level data is presented on a virtual site map
 - Automatic and immediate alerts on system issues pinpointed to module location
 - Easy access via web browser from any device



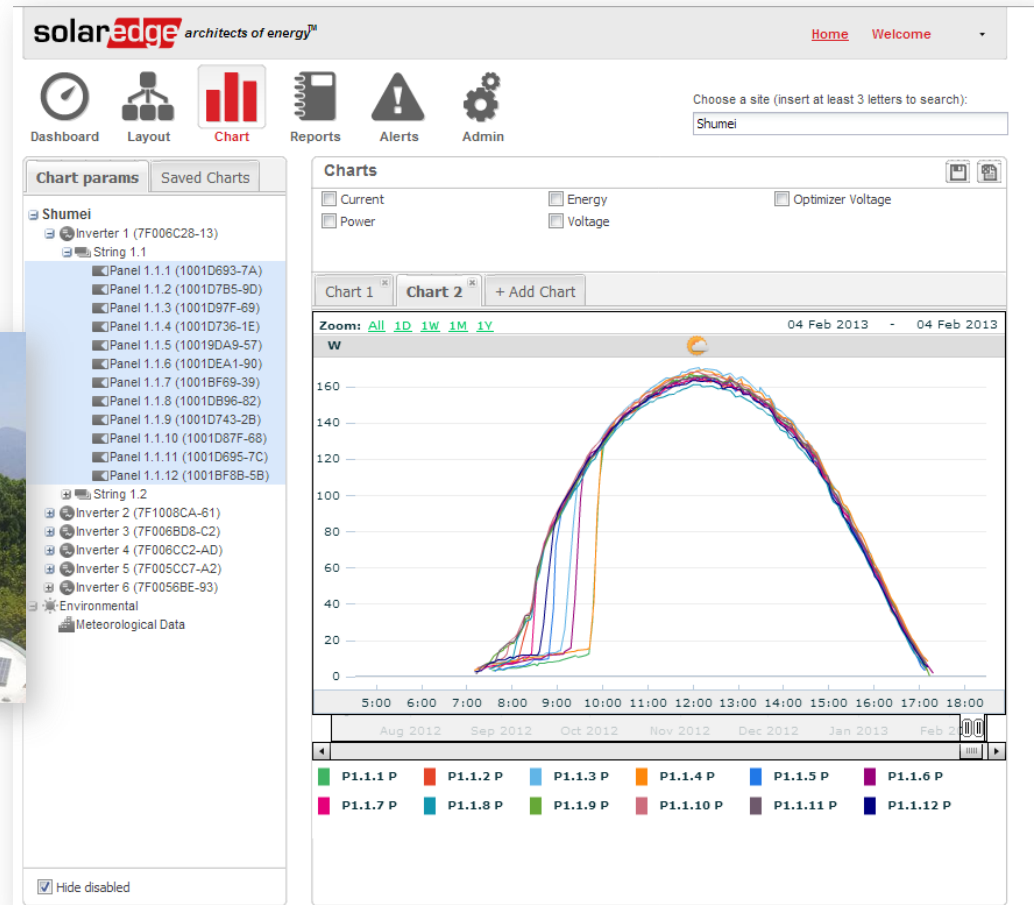
Enhanced System Performance

- Increased system availability and yield



Enhanced System Performance

- Remote diagnostics
- Resolution of issues undetected by string inverters
- Easy location of faults in field based on virtual map



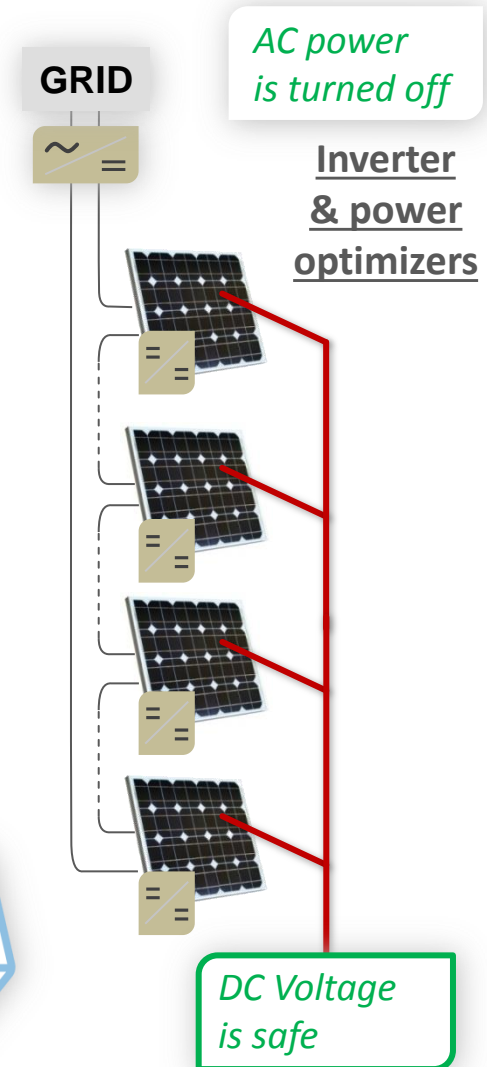
- Safety during installation, maintenance, firefighting & other emergencies
- Automatic module-level shutdown of DC current & voltage
 - Fire prevention: automatic prevention of electric arcs



450kW installation on the rooftops of a sustainable neighborhood, New Orleans, Louisiana, USA.
Installed by Pontchartrain Mechanical Co.

SolarEdge SafeDC™ Solution

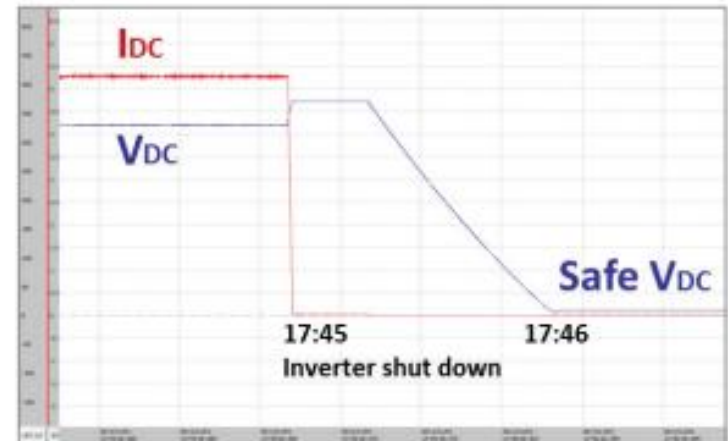
- Each module is equipped with a power optimizer
- When AC power is shut off the inverter stops sending a signal and all power optimizers shut off
- Each module produces 1V safety voltage (string <50v)



- Higher security for installers, maintenance teams & firefighters
 - Installation: safe string voltage - until inverter & AC supply are turned on
 - Maintenance: safe string voltage – automatic once inverter is turned off
 - Emergency: safe string voltage - automatic after grid disconnection
- Improved asset protection


Automatic DC shutdown

Safe DC voltage within 180 sec.



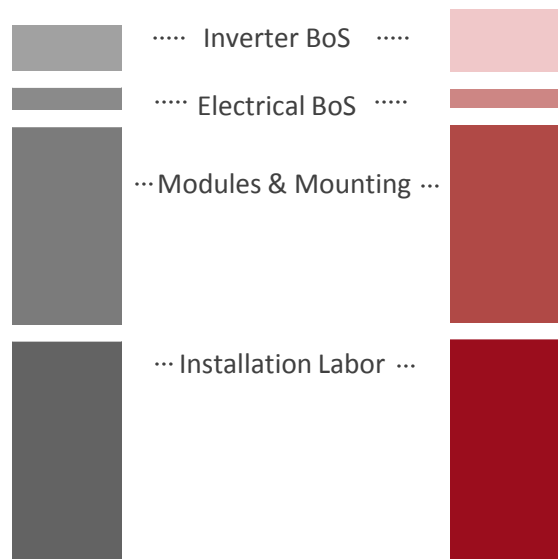


ROI Calculation



Lifetime Cost 50kW - System

Initial System Investment



Traditional

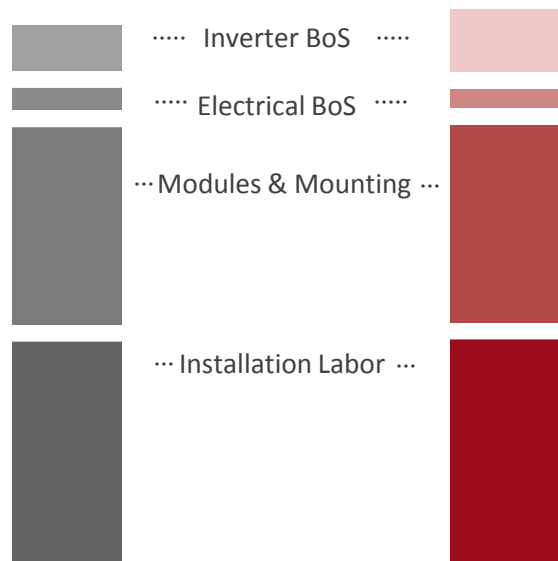
SolarEdge
OP600

Labor

Installation labor for all components.

SolarEdge: includes added labor for power optimizers

Initial System Investment

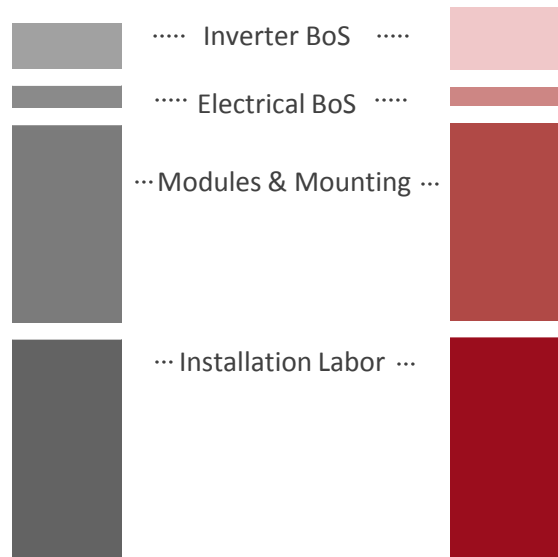


Modules & Racking
Same cost for both systems

Traditional

SolarEdge
OP600

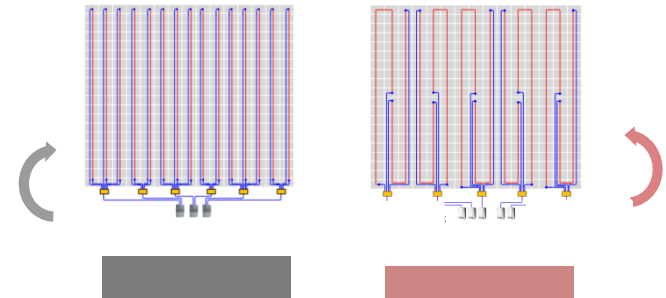
Initial System Investment



Traditional

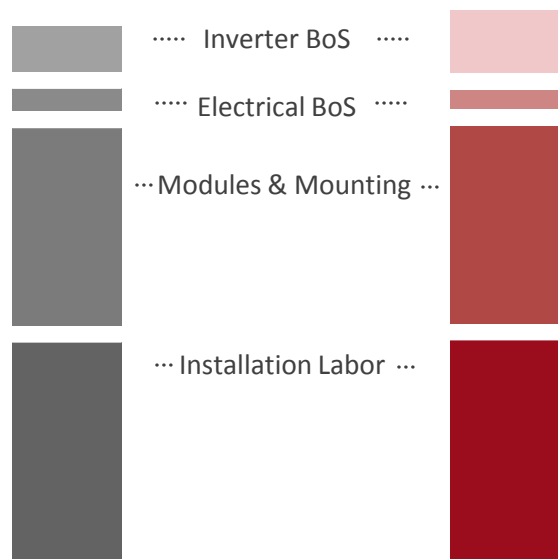
SolarEdge
OP600

Electrical BoS



SolarEdge: longer strings save >50%
on DC cables, combiner boxes, etc.

Initial System Investment



Traditional

SolarEdge
OP600

Inverter BoS

- Traditional inverter
- Power optimizers
- SolarEdge inverter



Includes:

- Monitoring HW
- 10 year warranty

Includes:

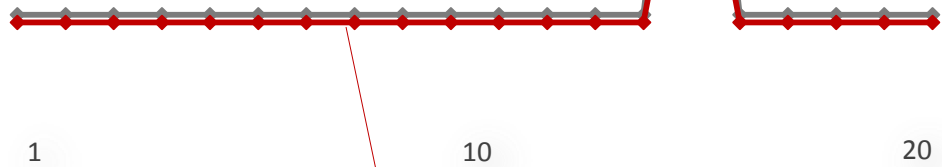
- Monitoring HW
- Inverter warranty: 12 years
- Optimizer warranty: 25 years

Maintenance and Replacements

Lifetime O&M Timeline, 25 years

- Power optimizers warranted for 25 years
- Replacement cost only for inverter (SolarEdge inverter cost < traditional inverter cost)

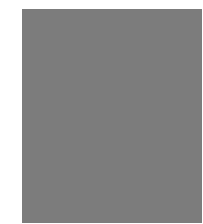
Traditional inverter replacement cost post warranty



~10% less O&M annually with SolarEdge due to Module-level monitoring


Total O&M (NPV), 25 years

20% O&M cost saving with SolarEdge



Traditional

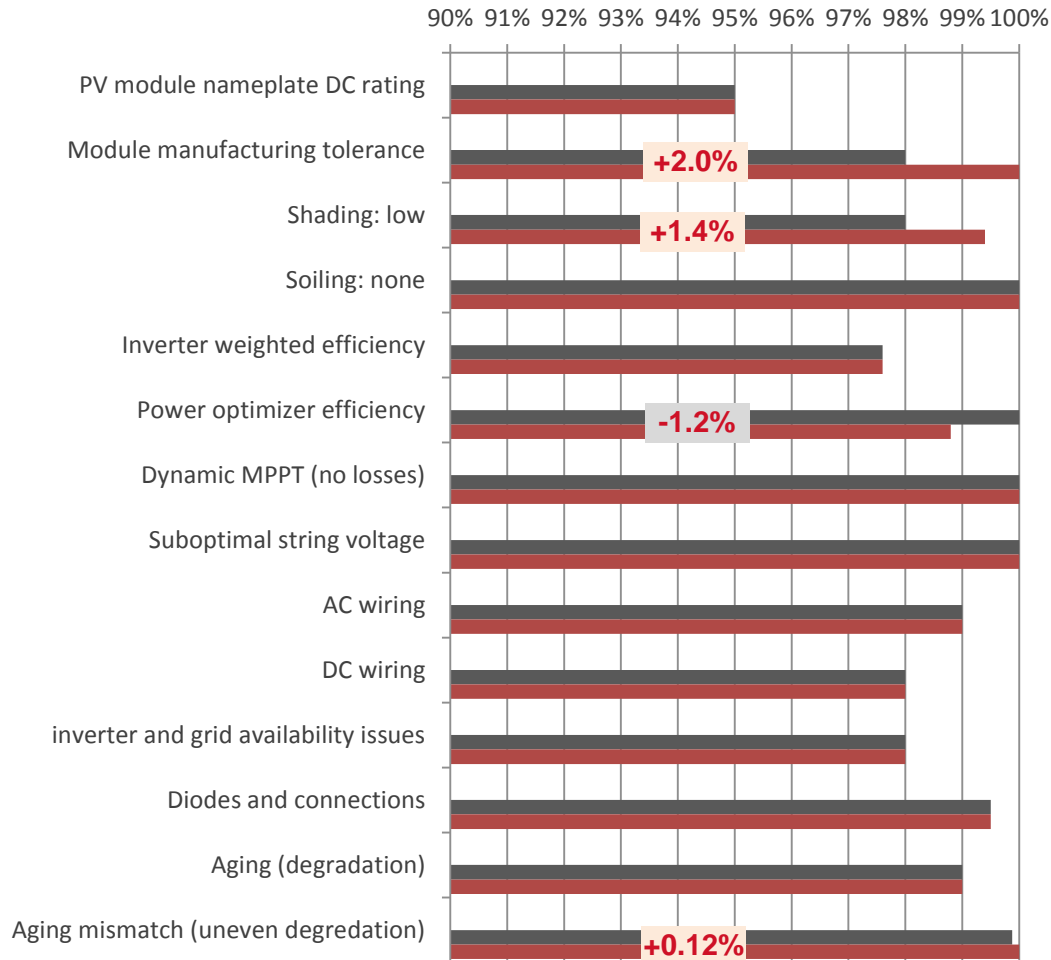
SolarEdge



Lifetime Energy Produced 50kW System

System Performance Ratio

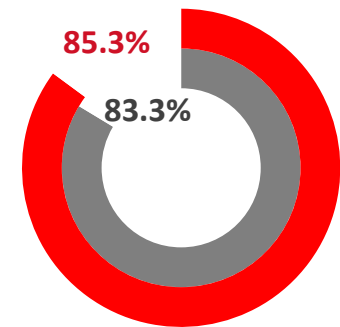
Comparison of SolarEdge and Traditional inverter performance ratio: Derating Factors (EOY 1)



Performance ratio

System performance ratio is the product of all derating factors

Module-level MPPT improves mismatch-related derating factors

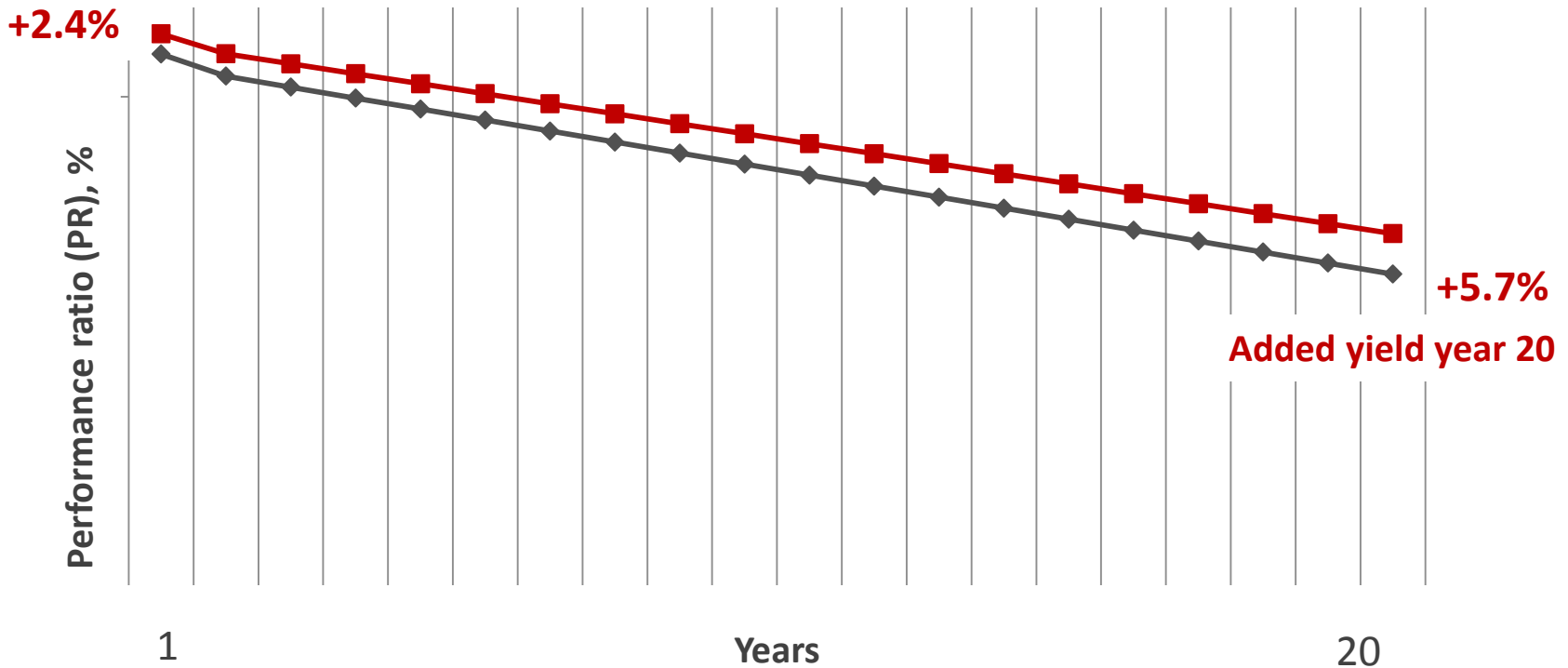


SolarEdge advantage: 2.4%

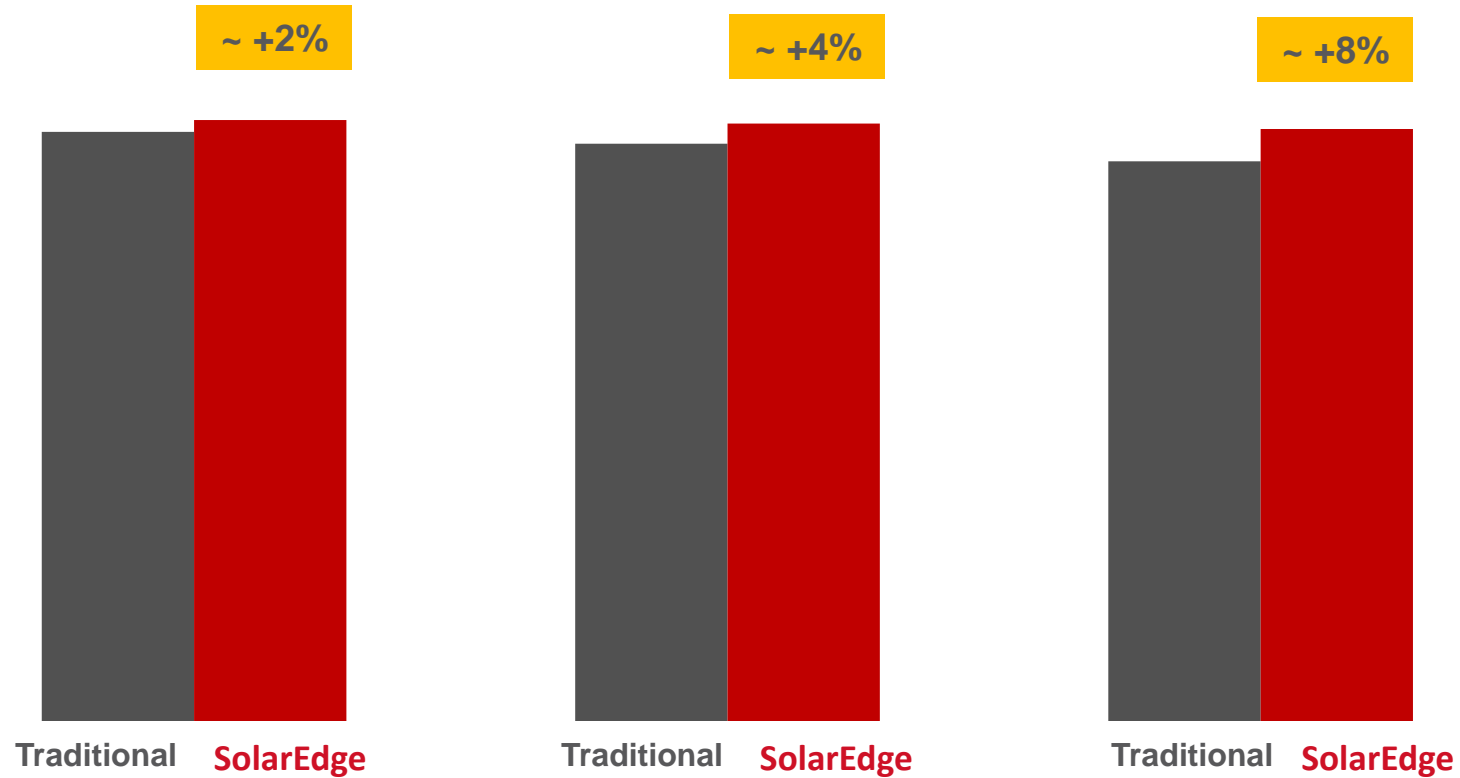
System Performance Over Time

- Annual aging degradation of system: 1%
- Growing degradation mismatch: 0.12% per year for traditional system
- SolarEdge total added energy over lifetime: +4%

Added yield year 1



Lifetime Energy Yield



Best-case system

Inherent mismatch only
(no shading, no soiling)

Good system design

Inherent mismatch and low
shading level

Typical system

Additional minor
environmental mismatch

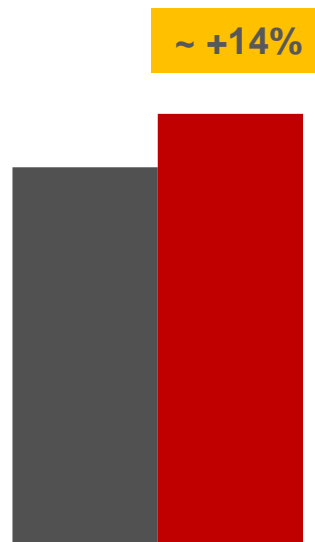
- Profit = Total lifetime revenue - Total lifetime expenses
 - Profits are provided in their net present value (discount rate: 2%)



Traditional SolarEdge
OP600

Best-case system

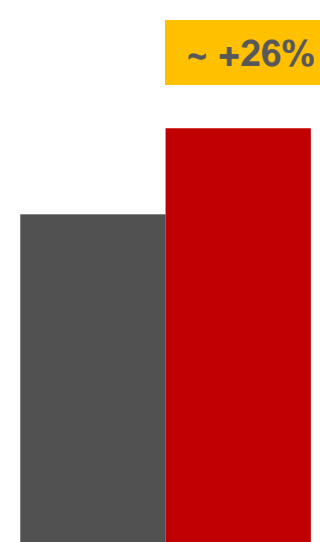
Inherent mismatch only
(no shading, no soiling)



Traditional SolarEdge
OP600

Good system design

Inherent mismatch and low
shading level



Traditional SolarEdge
OP600

Typical system

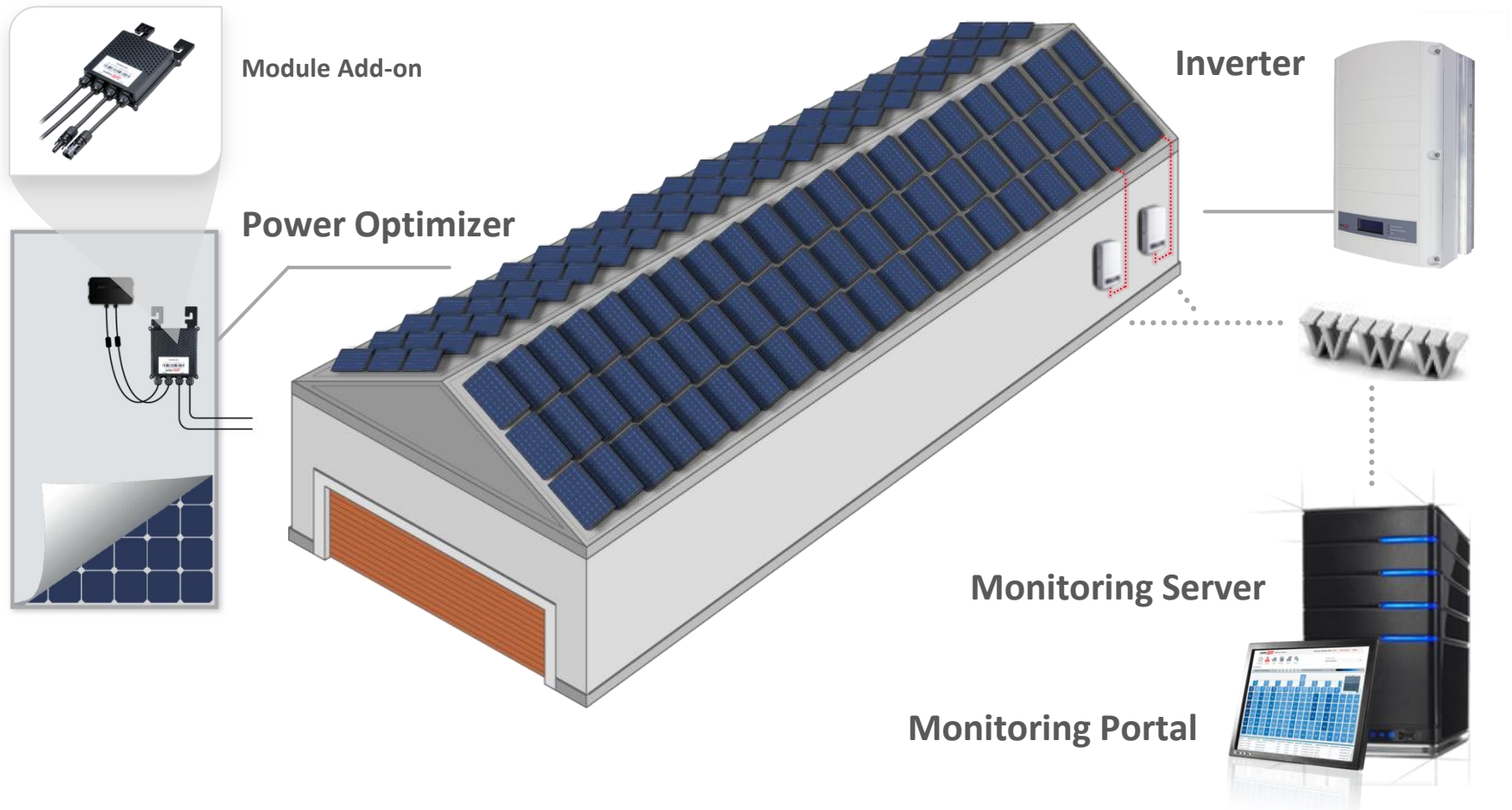
Additional minor
environmental mismatch



SolarEdge Commercial Product Offering

SolarEdge System Overview

- Module level optimization
- Fixed voltage – flexible design
- Module level monitoring
- Enhanced safety solution



SolarEdge Power Optimizers

- Per-module Maximum Power Point Tracking (MPPT)
- 99.5% maximum efficiency, 98.8% weighted efficiency
- Advanced, real-time performance measurement
- Automatic module shut-down for installer and firefighter safety
- Embedded by module manufacturers, or connected by installers to c-Si and thin-film modules



* Available H2 2013

250W-400W
Module add-on



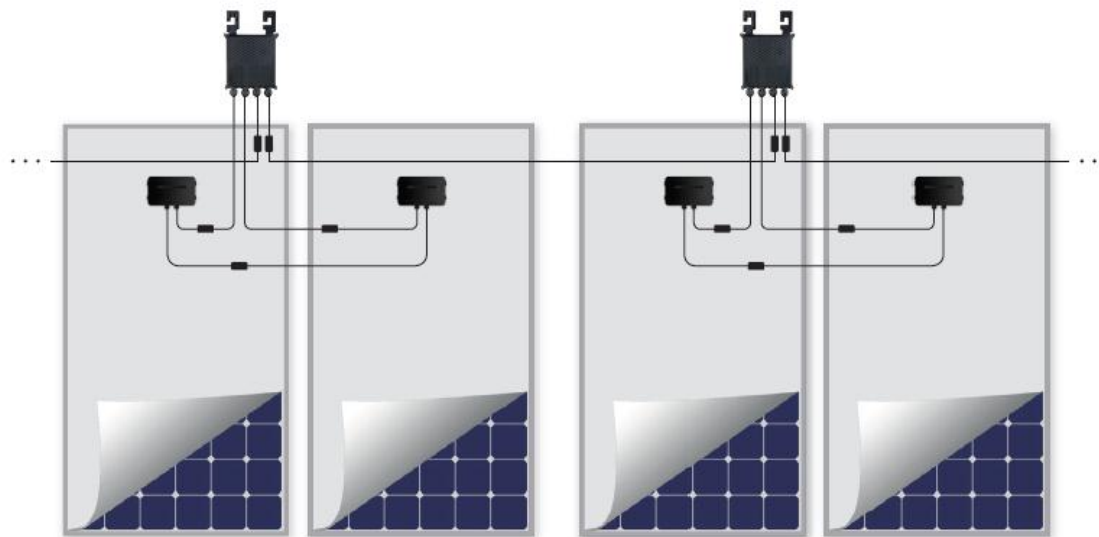
600W Module Add-On
for Commercial Installations



300W
Module embedded

New OP600

- 2 modules per power optimizer connected in series
- Up to 44 modules per string
- Compatible with inverters SE16k and up
- Max DC input power 600W
- Maximum input voltage/current 96V/10A



60 cell modules



- Inverters specifically designed for power optimizers fixed string voltage
- 98% maximum efficiency
- Simpler design → Highest reliability at minimal cost
- Built-in communication hardware



Three phase inverters
5kW – 17kW

- Inverters specifically designed for commercial installations with power optimizers
- Small, lightest in its class, and easy to install
- No electrolytic bulk capacitor for highest reliability
- Superior efficiency (>98%)
- Separate connection compartment for simple access
- Field-replaceable boards for easy maintenance
- IP65 – outdoor and indoor installation
- Available H2 2013



Commercial inverters 35kW – 50kW

- **Cost effective maintenance and increased system uptime**
 - Module-level and system-wide performance data available in real-time on a web portal
 - Data presented on a virtual site map
 - Automatic, accurate fault detection pinpointed to module location
 - Power-line communication. No added wiring



Pre Sale



Valuation

- LCOE calculation



Design

- System design consulting



Training

- Technical installation & maintenance training



On-going Service



Monitoring

- Module level performance data
- Remote troubleshooting



Support

- Local expert teams
- Online Service Portal
- Call centers



Maintenance

- On-site repair
- Preventive remote monitoring



Case Studies

50kWp – Maximum Roof Utilization

- **Location:**
Exeter, UK
- **Installation date:**
Sep. 2011
- **Inverters:**
5 x SolarEdge SE10k
- **Power optimizers:**
OP250-AOB
- **Installed by:**
SunGift Solar



“The SolarEdge system gives us the peace of mind we need in order to ensure that our customer is reaping all the benefits of their PV installation”

Scott Oldfield, Trade and Sales Manager of SunGift Solar

250kWp – Rooftop Installation

- **Location:**
Colmar, France
- **Installation date:**
Nov. 2010
- **Inverters:**
42 x SE6000
- **Power optimizers:**
1,063 x PB250-AOB
- **Installed by:**
Blue Ice



“I use SolarEdge for all of my installations because it ensures maximum energy output, reduced O&M cost and superior safety”

Eric Gatterer, CEO, Blue Ice

30kWp System – DC safety

- **Location:**
Paris ,France
- **Installation Date:**
Jul. 2011
- **Inverters:**
3 x SE10k
- **Power Optimizers:**
126 x AOB250
- **Installer:**
Yomatec



“When we spoke to the management of Hopital Privé Nord Parisien we realized how concerned they were about safety and related regulations. We were happy to provide a solution that ensures comprehensive safety for the hospital and its patients.”

Michel Ayache, Director of Marketing, Yomatec

55 kWp, Israel

- **Location:**
Carmiel, Israel
- **Installation date:**
Sep. 2011
- **Inverters**
4 x SE12.5k
- **Power optimizers:**
110 x OP500
(2 in 1)
- **Installed by:**
Yarok Natural
Energy



*„ The SolarEdge system is constantly producing more energy compared to a similar 50kW traditional system installed next to it and **will accelerate the return on investment**“*

Ran Mizrachi, Joint CEO, Yarok Natural Energy

1.63MWp – Largest System in NL

- **Location:**
The Netherlands
- **Installation date:**
July 2012
- **Inverters:**
119 x SE12.5K
- **Power Optimizers:**
5,712 x OP300-MV
- **Installed by:**
 - AliusEnergy



“By using the SolarEdge system, The VencoGroup achieved their goal for an innovative solution that minimizes the environmental impact of the VencoCampus and provides safe and sustainable energy.”

Ton van de Ven, AliusEnergy

1 MWp, Germany

- **Location:**
Bavaria, Germany
- **Installation date:**
Sep. 2012
- **Inverters:**
6 x SE15k; 19 x SE16k;
32 x SE17k
- **Power Optimizers:**
4092 x OP250-LV
- **Installed by:**
Renew



*„To fulfill its future responsibility, it needs to rely on the most **advanced technology available** today. And that is **module-level power optimization**.“*

*Thomas Rink, Managing Director, Renew
Handelsgesellschaft mbH*

Thank you

Email info@solaredge.com
Twitter www.twitter.com/SolarEdgePV
Blog www.solaredge.com/blog

Websites www.solaredge.us