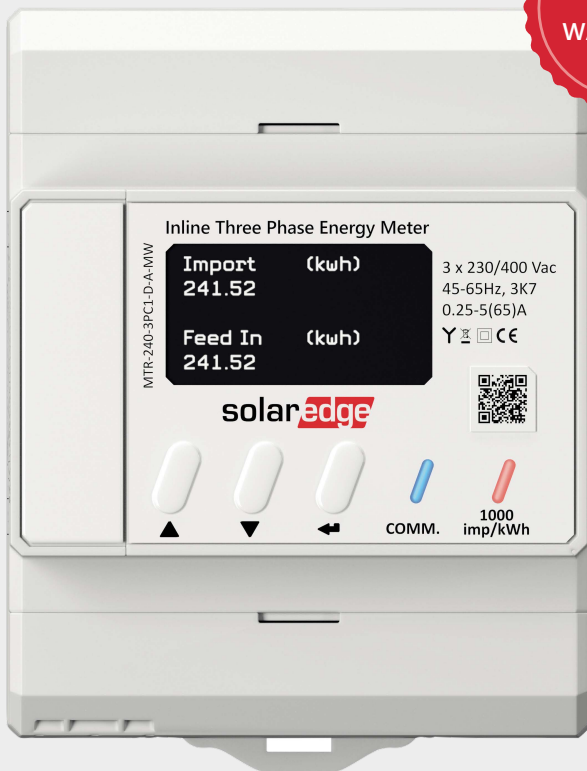


Inline Energy Meter

ACCESSORIES

5
YEAR
WARRANTY



Grow your revenues with an easily installed metering solution that fits comfortably into standard electrical DIN-rail cabinets

- Performs export/import, production and consumption energy readings with 1% accuracy
- Includes integrated current transformers for faster installations, reduced labor costs and simplified logistics
- Easier installations using SolarEdge Energy Net to communicate wirelessly with the inverter (RS485 connectivity is optional)
- Supports export/import limitation and SolarEdge Smart Energy applications
- Integrates smoothly and easily with SolarEdge Smart Energy solutions
- Enables direct connection of up to 65A per phase, for single and three phase grid connections
- Quick setup with automatic meter detection by the SolarEdge inverter
- Intuitive meter configuration and visibility to meter status using the SetApp mobile app

/ Inline Energy Meter

| Part Number | MTR-240-3PC1-D-A-MW | | MTR-240-1PC1-DW-MW | UNITS |
|---|--|-------------|--------------------|-----------------|
| Model Number | MTR EU3 | | MTR EU1 | |
| ELECTRICAL SERVICE | | | | |
| Nominal Voltage | 3 x 230/400 | | 1 x 230 | Vac |
| Voltage Range | Line to Line | 320 - 460 | - | Vac |
| | Line to Neutral | 184 - 264.5 | | |
| Supported Grids | L1 / L2 / L3 / N (WYE) | | L / N | |
| Power Consumption (max) | SolarEdge Energy Net Wireless Connection | < 2.0 | | W |
| | RS485 Wired Connection | < 1.8 | | |
| AC Frequency | 45 - 65 | | | Hz |
| Maximum Current (Imax) | 65 | | | A |
| Transitional Current (Itr) | 0.5 | | | A |
| Starting Current (Ist) | 20 | | | mA |
| Minimum Current (Imin) | 0.25 | | | A |
| Reference Current (Iref) | 5 | | | A |
| Active Energy Accuracy | EN54070 Class B ⁽¹⁾ IEC 62053-21 Class 1 | | | |
| Active Energy Accuracy Error | Itr ≤ I < Imax | 1 | | % |
| | Imin ≤ I < Itr | 1.5 | | |
| Reactive Energy Accuracy | IEC 62053-23 Class 2 | | | |
| Reactive Energy Accuracy Error | Itr ≤ I < Imax | 2 | | % |
| | Imin ≤ I < Itr | 2.5 | | |
| Over-voltage | CAT III 600 | | | Vac |
| RS485 COMMUNICATION | | | | |
| RS485 Terminal Cross Section | 0.2 - 2 | | | mm ² |
| Interface | RS485 half duplex, 3 wires (A, B, GND) | | | |
| Protocol | MODBUS RTU | | | |
| Power Register Update Resolution | <200 | | | ms |
| All Other Registers | < 4 | | | sec |
| RS485 Line Termination | 120 (selectable) | | | Ω |
| WIRELESS COMMUNICATION⁽²⁾ | | | | |
| Frequencies | 863 - 876 (band 868) 902 - 930 (band 915) | | | MHz |
| Transmit Power EIRP | 14 (with internal antenna) 16 (with external antenna) | | | dBm |
| Transmit Power (Max) | 14 | | | dBm |
| Modulation | OQPSK | | | |
| Internal Antenna Gain | 0 | | | dBi |
| External Antenna ⁽³⁾ Gain | 2 | | | dBi |
| Antenna Connector | SMA-RP | | | |
| External Antenna Mounting | Wall mount with bracket | | | |
| PULSE DISPLAY | | | | |
| Pulse Frequency | 1000 | | | imp / kWh |
| Pulse Length | 5 (min), 80 (max) | | | ms |
| INSTALLATION/MECHANICAL | | | | |
| Display | 8 digits | | | |
| Protection Rating (Indoor) | IP51 | | | |
| Mounting Support | DIN rail | | | |
| Weight | 320 | | | g |
| Material | PC Lexan 503R | | | |
| Dimensions (W x H x D) | 72 x 90 x 58 | | | mm |
| AC Terminal Cross Section Area | 1.5 - 25 | | | mm ² |

(1) EN54070 Class B, when AC inputs are connected to the upper terminal blocks. EN54070 Class A, when AC inputs are connected to the lower terminal blocks

(2) SolarEdge Energy Net wireless communication requires inverter support

(3) External antenna kit should be purchased separately (PN: SE-ANT-ENET-HB-01)

/ Inline Energy Meter

| Part Number | MTR-240-3PC1-D-A-MW | MTR-240-1PC1-DW-MW | UNITS |
|------------------------------------|--|--------------------|-------|
| Model Number | MTR EU3 | MTR EU1 | |
| ENVIRONMENTAL | | | |
| Operating Temperature | -40 to +70 Suitable for outdoor installations | | °C |
| Storage Temperature | -40 to +85 | | °C |
| Relative Humidity (non-condensing) | 75 (yearly average) 95 (30 days/year) | | % |
| Installation Altitude | < 2000 | | m |
| Pollution Degree | 2 | | |
| STANDARD COMPLIANCE | | | |
| Safety | UL 61010-1; CAN/CSA-C22.2 No. 61010-1-04; IEC 61010-1 | | |
| Immunity | EN 61000-4-8; EN 61000-4-2; EN 61000-4-3; EN 61000-4-4; EN 61000-4-5; EN 61000-4-6; EN 61000-4-11 | | |
| Emissions | FCC Part 15, Class B; EN 55032 Class B, EN 61000-3-2, EN 61000-3-3 | | |
| Wireless | IEC EN 300 220 | | |

SolarEdge is a global leader in smart energy technology. By leveraging world-class engineering capabilities and with a relentless focus on innovation, SolarEdge creates smart energy solutions that power our lives and drive future progress.

SolarEdge developed an intelligent inverter solution that changed the way power is harvested and managed in photovoltaic (PV) systems. The SolarEdge DC optimized inverter maximizes power generation while lowering the cost of energy produced by the PV system.

Continuing to advance smart energy, SolarEdge addresses a broad range of energy market segments through its PV, storage, EV charging, UPS, and grid services solutions.

 SolarEdge

 @SolarEdgePV

 @SolarEdgePV

 SolarEdgePV

 SolarEdge

 www.solaredge.com/corporate/contact

solaredge.com

© SolarEdge Technologies, Ltd. All rights reserved. SOLAREEDGE, the SolarEdge logo, OPTIMIZED BY SOLAREEDGE are trademarks or registered trademarks of SolarEdge Technologies, Inc. All other trademarks mentioned herein are trademarks of their respective owners. Date: 06/2021 DS-00001-1.3-ENG. Subject to change without notice.

Cautionary Note Regarding Market Data and Industry Forecasts: This brochure may contain market data and industry forecasts from certain third-party sources. This information is based on industry surveys and the preparer's expertise in the industry and there can be no assurance that any such market data is accurate or that any such industry forecasts will be achieved. Although we have not independently verified the accuracy of such market data and industry forecasts, we believe that the market data is reliable and that the industry forecasts are reasonable.