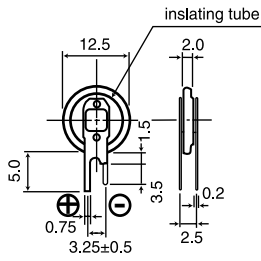


VL1220

■ Dimensions(mm)

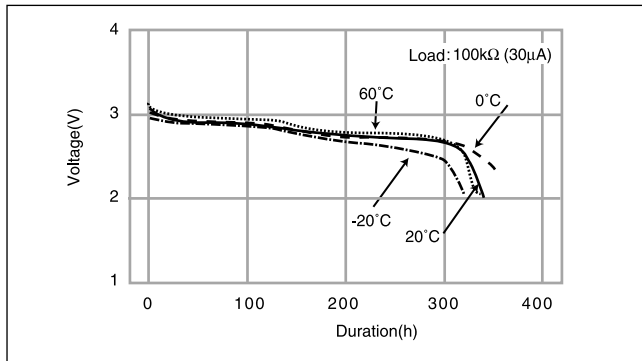
(VL1220 / 1F5U)



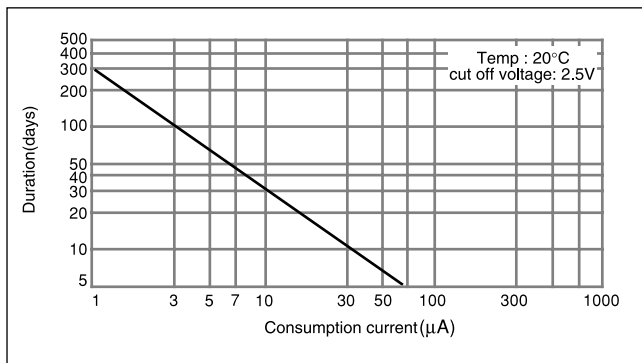
■ Specification

Nominal voltage(V)	3
Nominal capacity(mAh)	7.0
Continuous standard load(mA)	0.03
Operating temperature(°C)	-20 ~ +60

■ Discharge Temperature Characteristics



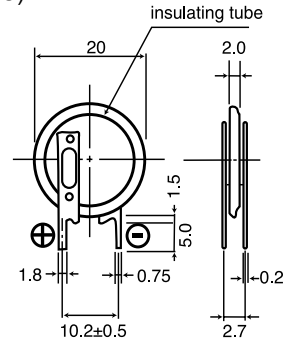
■ Consumption current vs. Duration time



VL2020

■ Dimensions(mm)

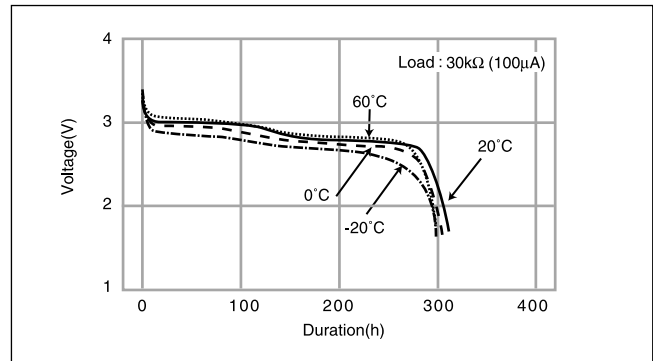
(VL2020 / 1VC)



■ Specification

Nominal voltage(V)	3
Nominal capacity(mAh)	20.0
Continuous standard load(mA)	0.07
Operating temperature(°C)	-20 ~ +60

■ Discharge Temperature Characteristics



■ Consumption current vs. Duration time

