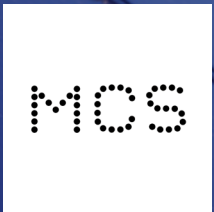


# ESDEC

INNOVATIVE MOUNTING SYSTEMS



CERTIFIED

## THE NEW STANDARD FOR MOUNTING ON SLANTED ROOFS

**CLICKFIT** EVO

TILED ROOF

[www.esdec.com](http://www.esdec.com)

# CLICKFIT EVO'S 4 BASIC COMPONENTS

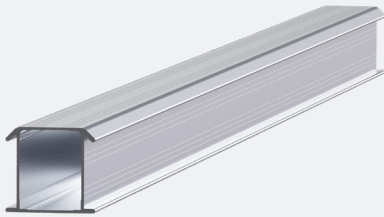
HOOKS OR SCREWS



## 1. UNIVERSAL ROOF HOOK / TRUSS HOOK

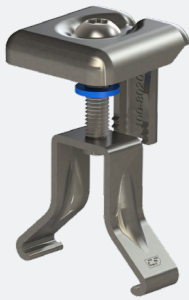
Quick & flexible installation with the ClickFit EVO Universal Roof Hook without screwing. Do you prefer screwing into the truss? Use the ClickFit EVO Truss Hook. Do you prefer screws? Use the ClickFit EVO Truss Hook. Universal Roof Hook and Truss Hook can be combined in a single roof construction.

- Universal Roof Hook for all roof tile/batten combinations
- Easy mounting process from the top
- Stepless adjustment of height and width
- Better point load distribution, lower risk of tile breakage and leakage
- Self-aligning click connection: easier and faster
- Can be used for horizontal and vertical mounting
- Integrated cable management



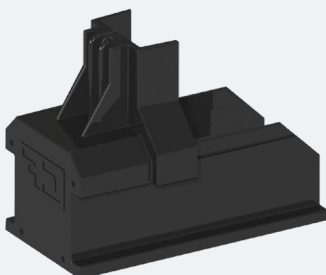
## 2. MOUNTING RAIL

- 30% stronger
- 30% lighter
- Suitable for larger roof spans



## 3. UNIVERSAL MODULE CLAMP

- Universal module clamp: suitable for all framed solar panels
- Can be used as centre clamp or as end clamp in combination with end cap
- Standard assembly
- Including bonding for the solar panels
- Available in grey and black



## 4. END CAP

- End cap holds the module clamp in its position
- Elongated end cap to allow for aesthetically pleasing finish
- Available in grey and black



## MOUNTING HAS NEVER BEEN EASIER

### ClickFit EVO; universal and fast

Esdec developed ClickFit EVO specifically for the professional solar installer. The mounting system consists of 4 components that can be used to mount all conventional solar panels on any tiled roof. Thanks to its unique properties, this mounting system allows for a mounting process that is twice as fast.

### Mounting method of your choice; hooks or screws

With the hook and click technique of ClickFit EVO, you can easily, quickly and safely install solar panels on a tiled roof. The ClickFit EVO Universal Roof Hook eliminates the need to drill holes in the roof construction, allowing the roof construction of the end user to stay fully intact. The universally adjustable roof hook fits all roof tile/batten combinations, and the ingenious water barrier smartly prevents leakage.

Do you prefer screwing into the truss? Use the ClickFit EVO Truss Hook. This system consists of a hook with a wider top plate that can be screwed onto a truss, tile or roof boarding. This offers flexibility in the placement and attachment of the truss hook. You can also combine the ClickFit EVO Universal Roof Hook and Truss Hook in a single project.

### Flexible and easy mounting process

If you work with ClickFit EVO, one tool is all you need. The revolutionary hook and click technique eliminates the need for other tools. Thanks to the smart design of this innovative mounting system, you can place the panels both in landscape or portrait orientation.



**CERTIFIED**

### ClickFit Evo for tiled roofs is MCS certified

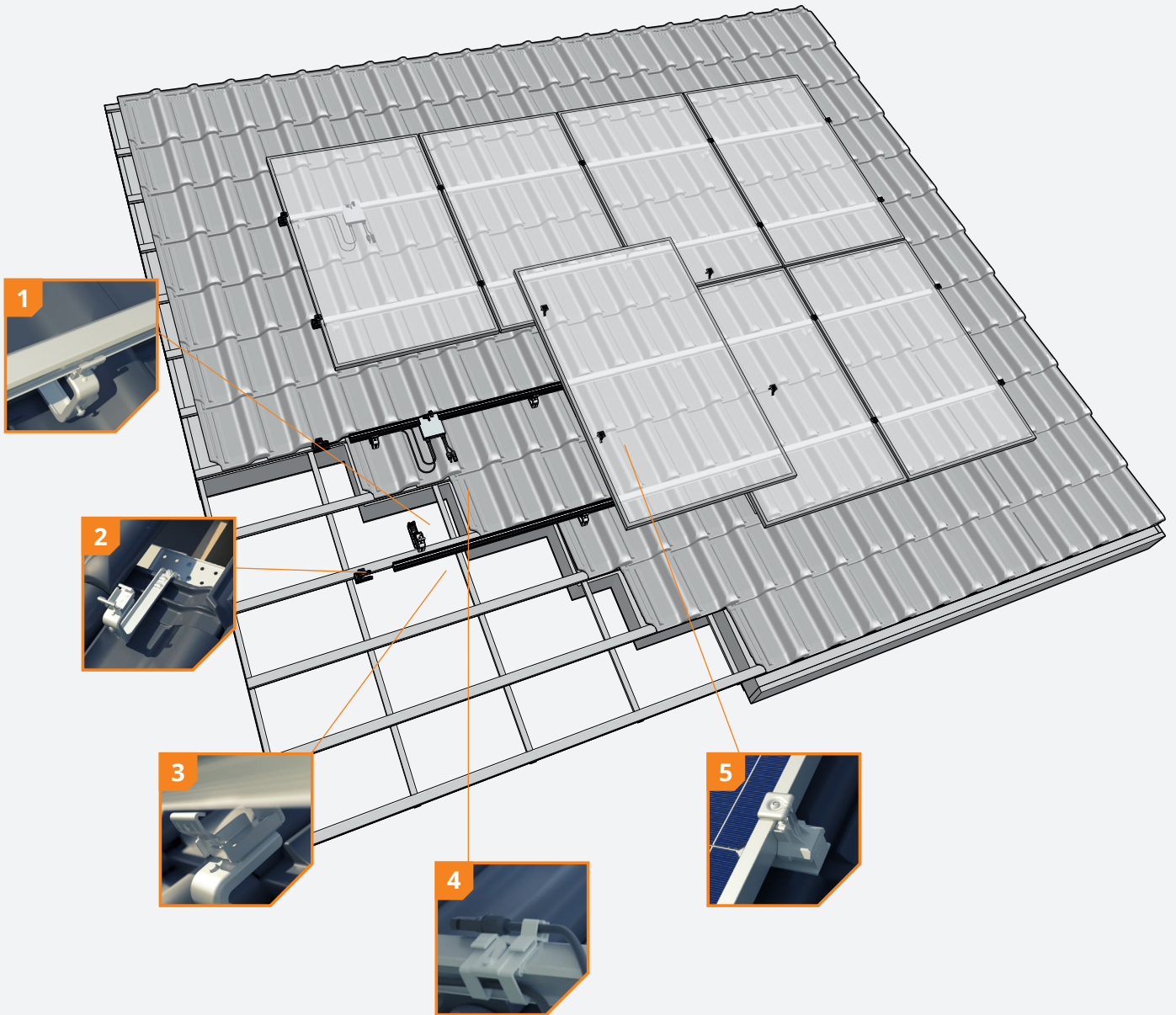
ClickFit Evo for tiled roofs, both in the version with the truss hook and the version with the universal hook, is MCS certified. Meeting MCS recognised industry standards proves the high quality, competency and compliance of ClickFit Evo for tiled roofs.

#### BENEFITS FOR THE INSTALLER

- ✓ Up to 40% quicker mounting
- ✓ Only 4 components
- ✓ Only 1 tool necessary
- ✓ Up to 20 years' warranty

#### BENEFITS FOR THE END USER

- ✓ Rock solid basis for solar panels
- ✓ The roof stays intact
- ✓ Reliable
- ✓ Up to 20 years' warranty



**1 Universally adjustable**

Our universal Magnelis coated roof hook is infinitely adjustable in height and width, and can thus be used for all roof tile/ batten combinations.

**2 Screw option possible**

The ClickFit EVO Truss Hook has a screw plate. This allows the truss hook to be flexibly screwed to the roof.

**3 Fully renewed snap connection mechanism**

The ClickFit EVO Universal Roof Hook is equipped with a self-aligning snap connection mechanism, meaning that the mounting rail can always be easily installed from above

**4 Integrated cable management**

Cables and plugs can be neatly and safely stored away in both the roof hook and the cable clip. The optimiser can also easily be snapped onto the cable clip.

**5 Always the right size clamp**

The universal module clamp is suitable for all types of framed solar panels and can be used both as a centre clamp and – in combination with the end cap – as an end clamp.

## ROOF FASTENERS



ClickFit EVO Universal Roof Hook  
1008040



ClickFit EVO Truss Hook  
1008045

## MOUNTING RAIL



ClickFit EVO Mounting rail	
Mounting rail 1106mm	1008121
Mounting rail 2174mm	1008122
Mounting rail 3242mm	1008123
Mounting rail 3500mm	1008007
Mounting rail 4310mm	1008124
Mounting rail 5378mm	1008125
Mounting rail 6446mm	1008126

## MODULECLAMP & END CAP



ClickFit EVO Module Clamp Universal grey  
1008020



ClickFit EVO Module Clamp Universal black  
1008020-B



ClickFit EVO Mounting rail End cap grey  
1008060



ClickFit EVO Mounting rail End cap black  
1008060-B

## ACCESSORIES



ClickFit EVO Mounting rail Coupler  
1008061



ClickFit EVO Mounting rail Cable clip optimizer ready  
1008062



ClickFit EVO Roof hook Spacer  
1008063



ClickFit EVO Auxiliary set with cable clip  
1008064

## Calculator

In the Esdec calculator you can manage and calculate all your projects, for both pitched and flat roofs. One platform with all Esdec mounting systems for the most reliable calculation of your project.

- Save time: manage all your projects on one platform
- One calculator for projects on pitched and flat roofs
- All calculations are based on extensive testing and the latest safety standards

Go to [eu.esdec.com/en/calculator](http://eu.esdec.com/en/calculator)



## Warranty

ClickFit EVO meets all of the requirements and standards that currently apply. ClickFit EVO comes with a unique 20-year warranty, thus ensuring the system's quality.

- Use of premium high tech materials
- Extensively tested
- BDA/KIWA certification
- 20 years' warranty





**QUICK**  
**RELIABLE**  
**INNOVATIVE**

**MAKE THE CONNECTION  
WITH ESDEC**

Esdec has developed, produced and supplied professional mounting systems for solar panels on roofs since 2004. ClickFit and FlatFix are inspired by installers who regularly place solar panels. Easy, quick and reliable installation with innovative, high-grade and sustainable mounting systems; that is what Esdec offers.

**Esdec**

Londenstraat 16  
7418 EE Deventer  
The Netherlands

☎ +31 850 702 000

✉ info@esdec.com

[www.esdec.com](http://www.esdec.com)